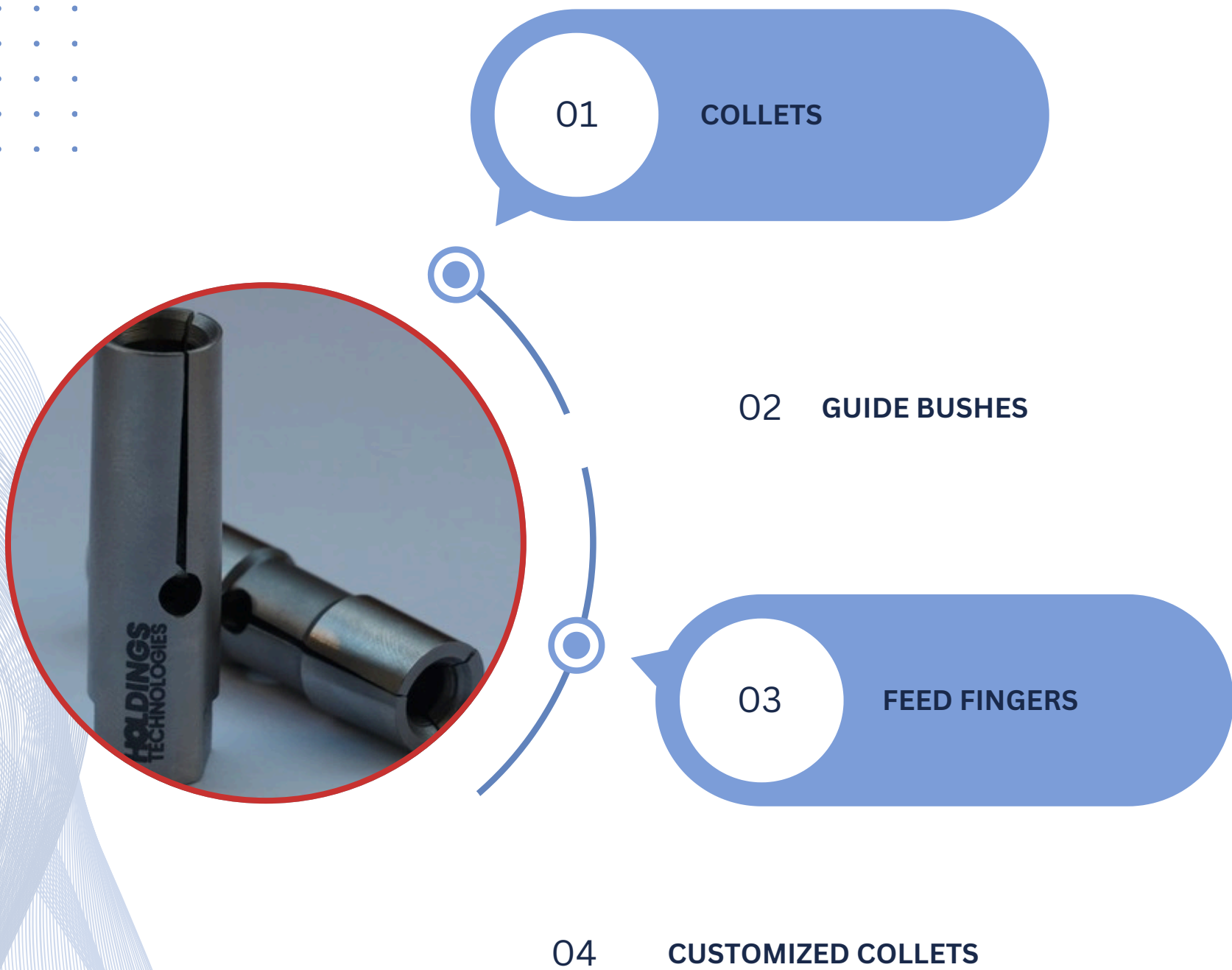




HOLDINGS TECHNOLOGIES INNOVATIONS manufactures premium collets, carbide-lined guide bushings, and bar feeder collets under the brand HOLDINGS TECHNOLOGIES, leading the work-holding solutions industry.



AUTOMOTIVE
AEROSPACE
DEFENSE
MEDICAL
ELECTRONICS
PNEUMATICS
HYDRAULICS
HOME APPLIANCES

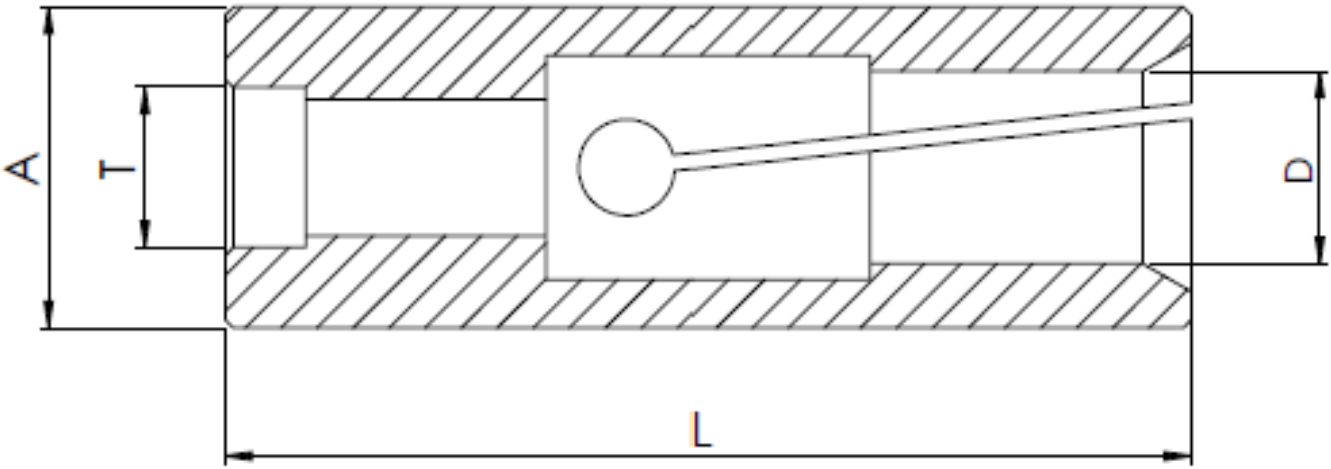
BARFEEDER COLLETS - INTERNAL THREAD

**GRIPPING EXCELLENCE,
DELIVERING PRECISION**





Holdings Technologies Innovations Feed Fingers are precision-ground to exact sizes, guaranteeing the highest machining standards and providing exceptional performance in even the most demanding applications. Collets are available in both smooth and serrated. Round / Hexagon / Square /Profile options to meet various application needs.



A Head- ϕ **T** Thread - ϕ **L** Total Length **D** Bore - ϕ

Part No.	ϕA [mm]	L[mm]	T[Thread]	ϕD Min [mm]	ϕD Max [mm]
HBI/10-03	10	46	M6x1 LH	1	8
HBI/10-04	10	42	M6x0.75	1	8
HBI/10-06	10	50	M5x0.80 LH	1	8
HBI/10-08	10	50	M5x0.80	1	8
HBI/12-01	12	42	M7x0.75	1	10
HBI/12-04	12	40	M6x1 LH	1	10
HBI/12-06	12	42	M7x0.75	1	10
HBI/12-07	12	45	M5x0.80 LH	1	10
HBI/13-01	13	60	M8x1 LH	1	11
HBI/13-02	13	50	M5x0.80 LH	1	11
HBI/14-01	14	42	M8x1	3	12
HBI/14-04	14	42	M7x0.75	3	12
HBI/15-02	15	42	M8x1	3	13
HBI/15-03	15	60	M9x1 LH	3	13
HBI/15-04	15	60	M10x1 LH	3	13
HBI/15-07	15	40	M5x0.50	3	13
HBI/15-09	15	73	M10x1 LH	3	13
HBI/15-11	15	60	M10x1	3	13
HBI/15-12	15	60	M8x1	3	13
HBI/15-14	15	85	M12x1 LH	3	13
HBI/15-15	15	50	M9x1 LH	3	13
HBI/15-16	15	16	M8x1 LH	3	13
HBI/16-01	16	73	M10x1 LH	3	14
HBI/16-04	16	58	M9x1 LH	3	14
HBI/16-06	16	42	M8x1	12	14
HBI/18-03	18	42	M9x1 LH	6	16
HBI/18-04	18	60	M9x1 LH	13	16
HBI/18-05	18	59	M10x1 LH	13	16
HBI/18-06	18	59	M10x1	13	16
HBI/19-01	19	59	M10x1	13	17
HBI/19-06	19	60	M9x1 LH	13	17
HBI/19-08	19	40	M8x1	12	17
HBI/19-09	19	50	M5x0.80 LH	13	17
HBI/20-03	20	59	M10x1	4	17
HBI/20-04	20	60	M10x1 LH	13	17
HBI/20-07	20	60	M10x1	13	17
HBI/20-08	20	59	M9x1 LH	13	17
HBI/20-09	20	42	M10x1	8	17
HBI/20-10	20	59	M9x1	13	17
HBI/22-01	22	59	M10x1	17	19
HBI/22-04	22	59	M9X1LH	17	19
HBI/23-04	23	59	M10x1	17	20
HBI/23-05	23	60	M9x1 LH	17	20
HBI/24-01	24	60	M9x1 LH	17	21
HBI/25-06	25	59	M10x1	17	22
HBI/25-07	25	59	M10x1 LH	17	22
HBI/25-08	25	60	M9x1 LH	17	22
HBI/25-09	25	60	M17x1	13	22
HBI/26.5-01	26.5	65	M17x1	15	23
HBI/27-01	27	65	M10x1 LH	15	24
HBI/27-02	27	65	M10x1	15	24
HBI/27-03	27	59	M9x1 LH	15	24
HBI/29-01	29	65	M18x1.5 LH	17	26
HBI/30-01	30	65	M10x1	24	27
HBI/30-03	30	65	M18x1.5	17	27



Delivering precision and reliability where it matters most.

Part No.	ϕA [mm]	L[mm]	T[Thread]	ϕD Min [mm]	ϕD Max [mm]
HBI/30-04	30	65	M18x1.5 LH	17	27
HBI/30-05	30	65	M10x1 LH	17	27
HBI/32-01	32	70	M17x1 LH	19	29
HBI/32-02	32	80	M25x1.5 LH	19	29
HBI/32-04	32	80	M25x1.5	19	29
HBI/35-02	35	80	M25x1.5	29	32
HBI/35-04	35	80	M25x1.5 LH	29	32
HBI/36-01	36	100	M30x1.5	23	33
HBI/40-01	40	80	M25x1.5	32	37
HBI/42-02	42	90	M25x1.5 LH	29	39
HBI/42-04	42	80	M25x1.5 LH	32	39
HBI/42-05	42	90	M32x1.5 LH	29	39
HBI/42-08	42	80	M25x1.5	29	39
HBI/44-01	44	80	M25x1.5 LH	39	41
HBI/46-01	46	80	M25x1.5	37	43
HBI/46-02	46	80	M25x1.5 LH	41	43

PRODUCTS

COLLETS

Collets - Straight Face
Collets - Angular Face
Collets - Internal Thread
Collets - External Thread
Long Nose Collets - Tapered
Long Nose Collets - Straight
Collets - Sealed

BAR FEEDER COLLETS

Finger Collets - Internal Thread
Finger Collets - External Thread
Finger Collets - Pin Type
Special Finger Collets - Customized

CUSTOMIZED SOLUTIONS

Draw Tubes
Collet Sleeves
Collet Springs
Cap Nuts
Carbide Bushes
Toggles

GUIDE BUSHES

Drawn Type Guide Bush
Reinforced Shank Type Guide Bush
Traub
Magic Type
Special Guide Bushes - Customized

SPECIAL COLLETS

High Gripping Special Collets
Multi Spindle Collets
Internal Clamping Collets
Rotary Transfer / Hydromat Collets
Pick Up Collets
Special Collets

Note : All dimensions are provided in millimeters (mm).
We continually upgrade our products, so the specifications in the catalog are for reference only.
Manufacturer reserves the right to modify drawings, specifications, and dimensions without prior notice.