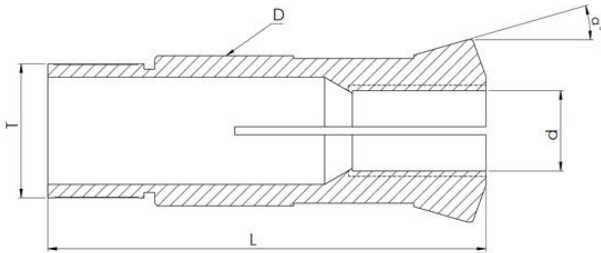




## GUIDE BUSH – REINFORCED SHANK

Holdings Technologies Guide Bushes are precision-ground to exact sizes, guaranteeing the highest machining standards and providing exceptional performance in even the most demanding applications.



**T** Thread    **D** Shaft -  $\varnothing$     **C** Total Length     $\alpha^\circ$  Taper Angle    **d** Bore -  $\varnothing$

Part No.	$\varnothing D$ [mm]	L[mm]	T[Thread]	$\alpha$ [degree]	Round	Hexagon	Square
HGR/22-05	22	68	M22x1	16°	16	13	11
HGR/34-06	34	150	M32x1.50	20°	27	22	19

*Note : All dimensions are provided in millimeters (mm). We continually upgrade our products, so the specifications in the catalog are for reference only. Manufacturer reserves the right to modify drawings, specifications, and dimensions without prior notice.*