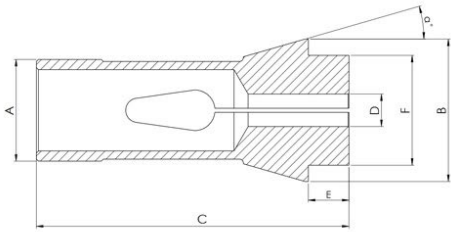


## COLLETS – ANGULAR FACE

Holdings Technologies Swiss-type collets are precision-ground to exact sizes, guaranteeing the highest machining standards and providing exceptional performance in even the most demanding applications.



**A** Shaft -  $\varnothing$    **B** Head -  $\varnothing$    **F** Nose -  $\varnothing$    **D** Bore -  $\varnothing$    **E** Nose Length   **C** Total Length

**$\alpha^\circ$**  Taper Angle

Part No.	$\varnothing A$ [mm]	$\varnothing B$ [mm]	$\varnothing F$ [mm]	E [mm]	C[mm]	$\alpha$ [degree]	Round	Hexagon	Square
CS4122	7	10.7	26	2.9	7	15°	4.5	3	3
CS4123	7	10.5	26	3	7	15°	4.5	3	3
CS4124	8	12	42	4.5	8	16°	5.5	4	3
CS4125	8	12	41	3.5	8	16°	4.5	3	3
CS4126	10	15.5	47.5	5.5	10	20°	7	5	4
CS4127	10	16	46	4	10	20°	7	5	4

Part No.	ØA[mm]	ØB[mm]	ØF[mm]	E [mm]	C[mm]	α[degree]	Round	Hexagon	Square
CS4128	10	16	47	5	10	20°	7	6	5
CS4129	10	15	43	5	10	15°	6.5	5	4
CS4130	12	18.1	44.5	4.3	12	15°	8	6	5
CS4131	12	18	64	6	12	16°	8	6	5
CS4132	13	19	64	6	13	16°	10	8	7
CS4133	14	18	46	4	14	13°	10	8	7
CS4134	15	22	47	5	15	20°	10.5	9	7
CS4135	15	21	64	6	15	16°	11	9	8
CS4136	15	20	45.5	2.5	15	15°	10	8	7
CS4137	15	21	64	6	17.5	16°	11.5	9	8
CS4138	16	22	55	5	16	15°	12	10	8
CS4139	16	21	64	6	16	16°	12	10	8
CS4140	16	21	62	4	16	16°	12	10	8
CS4141	16	21	62	4	16	16°	12	10	8
CS4142	18	25	67	7	19.5	15°	14	11	9
CS4143	20	28	67	7	21	16°	16	13	11
CS4144	20	27.5	60	5	20	15°	16	13	11
CS4145	20	26	54	5	19	15°	16	13	11
CS4146	20	26	67	3	19	16°	16	13	11
CS4147	22	32	66	7	25	16°	17	15	12
CS4148	23.8	28	62	7	22	15°	18	15	12
CS4149	24	28	62	7	22	15°	17	15	12
CS4150	25	35	77	10	27	16°	20	17	14
CS4151	25	34	65	6	25	15°	20	17	14
CS4152	25	35	85	18	27	16°	20	17	14
CS4153	25	35	72	5	27	16°	20	17	14
CS4154	26	32	67	7	27.5	13°	20.5	17	14
CS4155	26	36	67	7	28	15°	20.5	17	14
CS4156	27	38	72.7	8	30	15°	23	19	16



+91 422 2481092  
+91 8105386917



[www.holdingsindia.com](http://www.holdingsindia.com)  
[info@holdingsindia.com](mailto:info@holdingsindia.com)



Holdings Technologies  
SF No 205/1B, 206/1B

Sri Raja Annamalai Nagar, Malumichampatti  
Coimbatore - 641050, Tamil Nadu - INDIA  
GSTIN : 33AARFH3988H1ZU

Part No.	ØA[mm]	ØB[mm]	ØF[mm]	E [mm]	C[mm]	α[degree]	Round	Hexagon	Square
CS4157	28	38	70	7	28	15°	23	19	16
CS4158	28	35	77	10	27.5	16°	22.5	19	16
CS4159	30	42	80	10	34	16°	25	21	17
CS4160	30	38	65	6	32	15°	25	21	17
CS4161	30	42	80	12	32	16°	25	22	18
CS4162	30	42	78	10	32	16°	25	22	18
CS4163	32	40	65	6	34	15°	26	22	18
CS4164	33	40	80	12	32	16°	28	24	20
CS4165	37	47	92	10	40	16°	32	27	22
CS4166	40	50	92	10	43	16°	35	30	24
CS4167	44	52	92	10	44	16°30'	38	32	27
CS4168	44.4	54.5	64	8.5	42	15°	37	31	26

**Note :** All dimensions are provided in millimeters (mm). We continually upgrade our products, so the specifications in the catalog are for reference only. Manufacturer reserves the right to modify drawings, specifications, and dimensions without prior notice.