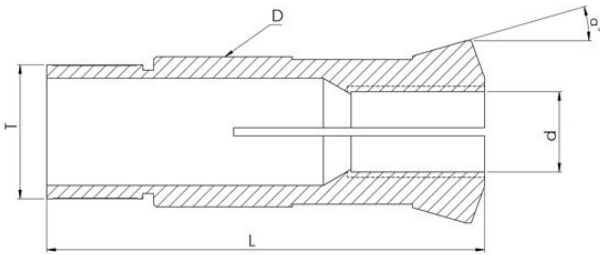


GUIDE BUSH - DRAWN

Holdings Technologies Guide Bushes are precision-ground to exact sizes, guaranteeing the highest machining standards and providing exceptional performance in even the most demanding applications.



T Thread **D** Shaft - \varnothing **C** Total Length **α°** Taper Angle **d** Bore - \varnothing

Part No.	$\varnothing D$ [mm]	L[mm]	T[Thread]	α [degree]	Round	Hexagon	Square
GD5124	7	30	M6x0.5	16°	35		
GD5125	9	44	M8X0.5	16°	5	4	3
GD5126	9	38.5	M8x0.75	16°	5	4	3
GD5127	9	51	M8x0.8	30°	5	4	3
GD5128	9	44	M8x0.75	16°	5	4	3

Part No.	∅D[mm]	L[mm]	T[Thread]	α[degree]	Round	Hexagon	Square
GD5129	10	58	M10x0.75	12°	5.5	4	3
GD5130	11	53	M10x0.75	16°	7	5	4
GD5131	11	53	M10x1	16°	7	5	4
GD5132	11	57	M10x0.75	16°	7	5	4
GD5133	11	52.4	M10x0.75	16°	7	5	4
GD5134	11	53	M10x0.80	16°	7	s	4
GD5135	12	52	M12x1	30°	7	6	5
GD5136	12	50	M10x0.75	16°	7	6	5
GD5137	12	50	M10x0.75	16°	7	6	5
GD5138	12	50	M12x1	30°	7.5	6	5
GD5139	12	50	M10x0.5	30°	7	s	4
GD5140	12	50	M12x1	30°	7.5	6	5
GD5141	13	41.5	M12x0.75	15°	8	6	5
GD5142	14	64	M13x0.75	16°	8.5	7	6
GD5143	14	62	M14x1	15°30'	8.5	7	6
GD5144	15	54	M14x1	16°	10	8	7
GD5145	15	54	M14x0.75	15°	8.5	7	6
GD5146	16	50	M14x1	16°	10	8	7
GD5147	16	60	M14x1	30°	10	8	7
GD5148	16	55	M16x1	30°	10	8	7
GD5149	16	63	M14x1	15°30'	10	8	7
GD5150	16	58	M14x1	16°	10	8	7
GD5151	16	59	M14x1	16°	10	8	7
GD5152	16	59	M15x1	16°	11	9	8
GD5153	16	58.5	M14x1	20°	10	8	7
GD5154	16	63	M14x1	16°30'	10	8	7
GD5155	18	59	M16x1	30°	12	10	8
GD5156	18	60	M18x1	30°	13	10	9
GD5157	18	60	M18x1	30°	13	10	9



Part No.	∅D[mm]	L[mm]	T[Thread]	α[degree]	Round	Hexagon	Square
GD5158	18	76	M18X1	22°	13	10	9
GD5159	18	60	M18X1	30°	12.5	10	8
GD5160	20	55	M20x1	30°	14	11	9
GD5161	20	55	M20x1	30°	13	11	9
GD5162	20	58	M18x1	15°	13	11	9
GD5163	21	57.5	M18x1	12°	14	11	9
GD5167	22	68	M19x1	16°	14	12	10
GD5168	22	70	M20x1	15°	15.5	13	11
GD5169	22	68	M19X1	16°	15	12	10
GD5170	22	68	M22x1	16°	16	13	11
GD5171	23	72	M22x1	16°	16.5	14	11
GD5172	24	61	M24x1	30°	16	13	11
GD5173	26	77	M25x1	16°	20	17	14
GD5174	26	71	M24X1.5	15°	18	15	13
GD5175	27	57.5	M24x1	12°	18	15	12
GD5176	28	81	M25x1	30°	20.5	17	14
GD5177	28	82	M25x1	16°	20.5	17	14
GD5178	28	82	M27x1	16°	22	18	15
GD5179	30	70	M28x1	16°	20.5	17	14
GD5180	30	85	M28x1	16°	20.5	17	14
GD5181	30	59	M30x1	15°	22	19	16
GD5182	30	59	M30x1	16°	22	19	16
GD5183	30	68	M30x1	16°	22	19	16
GD5184	30	70	M30x1	16°	22	19	16
GD5185	30	57.5	M30X1	16°	22	19	16
GD5186	32	71	M32x1	30°	23	19	16
GD5187	32	74	M32x1	30°	24	21	17
GD5188	33	70	M30x1	16°	26	22	18
GD5189	34	87.5	M34x1	10°	27.5	23	19

Part No.	∅D[mm]	L[mm]	T[Thread]	α[degree]	Round	Hexagon	Square
GD5190	34	87.5	M34X1	10°	27.5	23	19
GD5191	36	89.5	M36x1	13°	25	21	18
GD5192	40	72	M36x1	30°	29	25	21
GD5193	40	72	M40x1	30°	30	25	21
GD5194	41	54	M38x1	10°	32	27	22
GD5195	41	82	M38x1	10°	32	27	22
GD5196	41	82	M38X1	10°	32	27	22
GD5197	41	54	M38X1	10°	30	26	21
GD5198	42	82	M40x1	16°	33	28	23
GD5199	42	82	M40x1	20°30'	33	28	23
GD5200	42	82	M40x1	20°	33	28	23
GD5201	44	87	M40x1	20°	33	28	23
GD5202	45	82	M42x1	16°	36	30	25
GD5203	46	92	M45x1	16°	38	32	26
GD5204	46	82	M45x1	16°	38	32	26
GD5205	48	81	M48x1.25	30°	38	33	27
GD5206	48	82	M46x1	16°	38	33	27
GD5207	48	81	M46x1	10°	38	33	27
GD5208	48	82	M46X1	16°	38	33	27
GD5209	50	82	M49x1	19°	42	36	29
GD5210	52	99	M48x1.5 LH	10°	40	34	28
GD5211	52	95	M50x1	16°	43	37	30

Note : All dimensions are provided in millimeters (mm). We continually upgrade our products, so the specifications in the catalog are for reference only. Manufacturer reserves the right to modify drawings, specifications, and dimensions without prior notice.