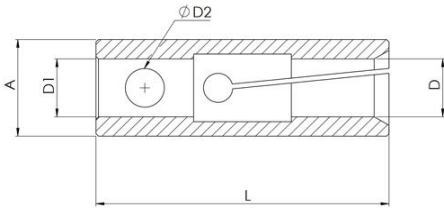




FINGER COLLETS – PIN TYPE

Holdings Technologies Swiss-type collets are precision-ground to exact sizes, guaranteeing the highest machining standards and providing exceptional performance in even the most demanding applications.



A Head - \varnothing **D1** Back Bore - \varnothing **D2** Pin - \varnothing **L** Total Length **D** Bore - \varnothing

Part No.	$\varnothing A$ [mm]	$\varnothing D1$ [mm]	$\varnothing D2$ [mm]	L[mm]	$\varnothing D$ Min [mm]	$\varnothing D$ Max [mm]
BP7131	5	28	3.5	1.5	1	3.5
BP7132	7	37	5	3	1	5.5
BP7133	7	28	3.5	1.5	1	5.5
BP7134	10	40	7	4	1	8
BP7135	12	40	8	4	1	10
BP7136	15	55	10	6	3	13
BP7137	15	40	11	6	3	13

Part No.	ØA[mm]	Ø D1[mm]	Ø D2[mm]	L[mm]	ØD Min [mm]	ØD Max [mm]
BP7131	15	50	11	6	3	13
BP7132	15	55	7	2	3	13
BP7133	16	65	11	6	3	14
BP7134	16	40	11	6	3	14
BP7135	17	55	7	2	13	15
BP7136	17	45	11	6	5	15
BP7137	18	40	11	6	3	16
BP7138	19	57	10	6	3	17
BP7139	19	57	10	2	3	17
BP7140	19	40	11	6	13	17
BP7141	20	56	10	6	13	17
BP7142	20	65	14	8	3	17
BP7143	22	65	14	8	18	19
BP7144	25	65	20	8	18	22
BP7145	25	76	16	8	3	22
BP7146	30	65	20	8	23	27
BP7147	32	65	20	8	28	29
BP7148	32	76	16	8	23	29
BP7149	34	90	20	8	18	31
BP7150	35	65	20	8	30	32

Note : All dimensions are provided in millimeters (mm). We continually upgrade our products, so the specifications in the catalog are for reference only. Manufacturer reserves the right to modify drawings, specifications, and dimensions without prior notice.